

Mother Lode Quilters' Guild

Newsletter



PO Box 649
Sutter Creek, CA 95685
www.mlqgsuttercreek.org



Volume 19, No. 2

Founded 2003

February 2022

Meetings are held the 4th Monday of each month and there is no meeting in December. Meetings begin at 6:30 pm at the Creekside United Methodist Church in Sutter Creek.

Remember to wear your name badge, bring Comfort Quilts, Show and Tell, and Block of the Month. When it's your turn, bring snacks.

See you February 28, 2022 (In Person)

From our MLQG President-Trudy Bauman

Happy New Year!

I know, I know, it's February already but 2021 was such a terrible year, it's worth celebrating the beginning of 2022 again. The daffodils are blooming all over Sutter Creek and I take that as a good sign for the upcoming year.

January saw us welcome our new MLQG Board Members. Some new, Sherry Phinney as VP and Carlene Drake as Treasurer and some retreads, Trudy Bauman as President and Terrie Van Scyoc as Secretary. Since this is a quilt show year, we look forward to working with the quilt show committee to make this one of our best shows ever.

The Mother Lode Quilt Guild is off to a good start this year with 2 new members joining our ranks. Hopefully, this will be a continuing trend for 2022. Sherry, our new Vice President, has some fun activities planned for this year, so if you know of anyone who is thinking about joining a quilt guild, MLQG would love to have them attend a meeting to see what we are all about.

See you at the February guild meeting and go forth and sew!



Trudy – MLQG President (again.....)

From our MLQG Vice-President-Sherry Phinney

I am looking forward to taking on the role of Vice Present for this new year. I have never done anything like this before and welcome any ideas you might have for future guild meeting presentations. I have a lot to learn but you are all so kind and helpful. I am thankful to Carlene, our outgoing VP, for her warm and helpful spirit. She has graciously accepted the invitation to present the information she received from a class she took. Carlene has a wonderful handout from the "Precision Piecing Tips" class she attended. She will be going over these tips and hopefully demonstrate some of them. I am personally trying to improve my piecing skills and am excited for the things she has to share. I would also like to invite you to come ready to share your favorite piecing tip. We have a wealth of knowledge and experience in our group, so don't be shy. Look forward to seeing you on February 28th.

Treasurer's Report Becky Podesta

\$ 10,496.14 Beginning Balance 1/1/2022

\$ 671.30 Receipts

\$ 243.00 Expenses

\$ 10,924.44 Ending Balance



Refreshments Janis Beach -Mary Beth Porter

Trudy Bauman
Mar Douglas
Carlene Drake
Bunny Smith
Suzy Morton



Upcoming Quilt Shows



Manteca Quilters Quilt and Doll Show

March 5 & 6

Saturday 9am -4pm

Sunday 9am - 3pm

San Joaquin Co Office of Education

Wentworth Center

2707 Transworld Drive

Stockton, CA 95206

www.mantecaquilters.com

Valley Quilt Guild Traditional With a Twist

March 12 & 13

Saturday - 10am - 5pm

Sunday - 10 am - 4pm

Yuba Sutter Fairgrounds

442 Franklin Ave

Yuba City, CA

www.valleyquiltguild.com



MEISSNER SAVINGS COUPON

Exclusive for Guild Members!

20% OFF

In-Stock Accessories & Notions*

*Discount taken from MSRP on in-store purchases. Not valid with any other offers. Selection varies by location. In-stock items only. Some restrictions apply. See store for details.



www.MeissnerSewing.com

Meissner Sewing & Vacuum Centers

Northern California's Largest Sewing, Quilting, and Embroidery Retailer

Lifetime Education

We offer a variety of creative classes and events for all interests and skill levels.

Factory-Trained Technicians

Service & repair by certified household and industrial sewing machine technicians.

Extensive Machine Selection

from top manufacturers of household and industrial sewing and embroidery machines.

Meissner Complete Protection Plan & Low Price Guarantee

Buy with complete confidence!

Top-of-the-Line Vacuums

by Miele, Dyson, Riccar, plus expert servicing.



Proud to be an Authorized Dealer
Availability varies by store.



Sacramento
(916) 920-2121

Folsom
(916) 984-7071

Roseville
(916) 791-2121

Santa Rosa
(707) 575-5259

San Jose
(408) 408-4880

Country Store Heather Beers

First, I'm sorry I missed the first meeting of 2022. I heard it was a great meeting.

We continue to work on projects and stock-up for the coming Quilt Show. It is so exciting and I can't wait.

If you or your husband have a dress shirt in really good condition that will not be worn again, please put it to the side. I have a cute bag idea that I'm going to try and make before our next meeting. If it works, I will bring a pattern. Here's hoping.

I am also hoping to put together some projects for people to make if you want them. I would appreciate knowing if this is helpful or if you would rather just have patterns and ideas provided.

When the summer approaches consider looking through your stash and seeing what you are ready to give up and donate to the Country Store.

I'm sorry I haven't arranged any work days but with the surge of COVID I personally can't put myself out for the possible exposure. As soon as things get better, I promise to start having work parties.

I hope everyone has/had a great Valentine's Day.

Smiles, Heather Beers

Membership Rita Maddock – Kathy Beach

Hope everyone is enjoying the new year. It was great to see everyone at our first meeting. We had 17 members pay their dues for the new year. Dues are \$30 for the year. If you still need to pay, checks can be made out to MLQG and you can bring the dues to our next meeting or mail them to our PO Box listed on the front of this newsletter. We will mail your membership card to you.

Thought of the Day

Every experience is a stitch in the fabric of your character.

Gary Clausing

Upcoming Regional Events

Stitches West

March 3-6

Safe Credit Union Convention
Center

1400 J Street

Sacramento, CA 95814

www.stitches.events/events/west

Sacramento Quilt, Craft & Sewing Festival

March 24-26

Cal Expo

1600 Exposition Blvd

Sacramento, CA 95815

www.quiltcraftandsew.com

Installation of Officers By Anelie Belden



Trudy Bauman
President



Sherry Phinney
Vice President



Terrie Van Scyoc
Secretary



Carlene Drake
Treasurer



**MOTHER LODE QUILTER'S GUILD
GENERAL MEMBERSHIP MEETING
January 24th, 2022**

Officers present-Past President Anelie Belden, **President** Trudy Bauman, **Past Vice President** Carlene Drake, **Vice President** Sherry Phinney, **Past Treasurer** Becky Podesta, **Treasurer** Carlene Drake, **Past Secretary** Trudy Bauman and **Secretary** Terrie Van Scyoc.

Members present and guests-21 members and 2 guests

Meeting called to order at 6:25pm

President-Past President Anelie Belden brought the meeting to order and welcomed all members and guests. Janis Beach moved to approve the November 2021 Minutes as printed in the newsletter and Bunny Smith seconded the motion. All were in favor of the motion.

Since the November elections there has been a change in officer commitment leaving the V.P. chair open. Sherry Phinney has offered to take that position and Carlene Drake will fill her spot as incoming Secretary. A vote was taken and the change was voted in 21 for and 0 against. Mary Beth motioned to approve the vote and it was seconded by Bunny.

Anelie performed the installation of new officers.

Vice President- Sherry Phinney will work with Carlene and come up with some ideas for classes and guest speakers for the guild this year.

Secretary-Past Secretary Trudy read the mail and we were sent a request for donations of items to be used as fund raisers for Uganda International to help girls be able to stay in school. Kathy Beach recommended that the guild donate one of the quilts in our Community Quilt stash to the organization and the members present voted unanimously to approve.

Treasurer-Past Treasurer Becky reported an opening balance of \$10496.14 and mentioned that membership checks would be added to this at the end of the meeting. Becky will have to have an audit done of the 2021 books and asked for two volunteers. Carlene and Bunny offered to help. They will meet before the February meeting.

Old Business-Block party had suggested in November possibly doing another type of project than we have done in the past for 2022. Anelie and Dawn did some research and have offered to teach a Row-by-Row project in a block of the month type of instruction. They have chosen a book that teaches row by row techniques and presented it to the members. There was a lot of interest and a sign-up sheet was put out. Terrie will order the books at a discounted price for members. They should be available to members at the February general meeting.

New Business-Anelie introduced a new member, Ladonna Freeman to the guild. Ladonna has recently gone to a tech school in Texas and is certified to clean, service and repair all types of sewing machines. She is starting a local business. She spoke to us of her history and school experience.

Committees

Quilt Show-Terrie reported that the October quilt show recent update from the City of Sutter Creek is that they will NOT be renting out the Community Center building in 2022. We can only reserve the Auditorium.

Basket theme ideas were handed out and members were told of all of the ways that they can help contribute to the Quilt Show. Make quilts, make or donate items to be sold at the Country Store, make Silent Auction items, donate basket content items and large baskets, enter the Quilt Challenge and Volunteer time at the show. Terrie reported that the 2022 Quilt Show is on Oct. 8th and 9th. A few members mentioned that some of our signs have "First Weekend in Oct" printed on them. The Quilt Show Committee will address this issue and have a final report on the date in February.

Opportunity Quilt -Mar gave a report on the Opportunity Quilt visitation dates to other guilds and also the upcoming visiting quilts that have been scheduled.

Sunshine-Anelie reported that Ted Maddock has suffered a heart attack and then a stroke. He is currently in the Bay area and Rita will be staying down there with him.

Newsletter- Suzy requested that all newsletter articles be submitted by February 6th please.

Show and Tell January 2022



When
a woman in her craft room says
five more minutes... Think
the last five minutes of
the fourth quarter
when both teams
still have all their time outs.



HAPPY
BIRTHDAY

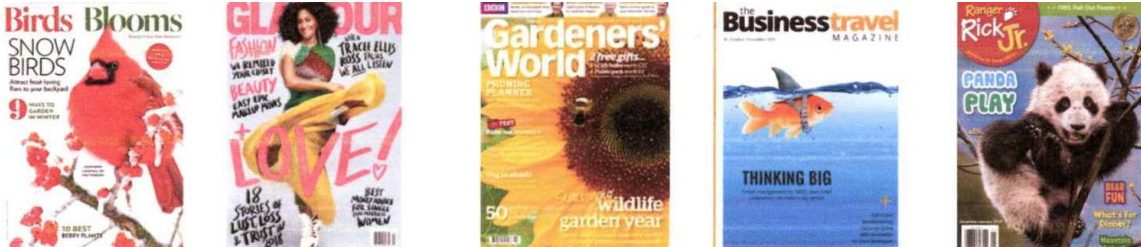
Dorothy Presnall 2/1
Terrie Van Scyoc 2/16



Quilt Show Anelie Belden

I would like to encourage you to be working on your **Quilt Challenge for the Quilt show.**

The inspiration for your quilt challenge will be the front cover of a magazine. Choose any magazine that inspires you. It could be travel, food, gardening, even quilt magazines. Use anything on the front cover to come up with your design. Project must be quilted. 100" Maximum perimeter. Can be smaller. This can be a table runner, wall hanging or small quilt. It is up to you. **Magazine should be on display with the quilt.**



Row by Row Quilt Dawn Schaaf and Anelie Belden

Dawn and I are very excited to share the making of this quilt with the guild. If you would like to participate, Terrie VanScyoc can order the book for you. Don't get too overwhelmed by the fabrics needed! Start with a fat quarter collection and you can add to it as you go. Or better yet, browse through your fabric stash and create your own collection!!

At our meetings we will give a brief demo of the lessons being learned for each row. February will be row 1. Join us in learning and creating this quilt together!! If you have any questions, you can contact Dawn or



Row 1: Simple Patches

- You will master the following techniques with this row:
- Accurate cutting (page 12)
 - Exact 1/4" seam allowance (page 11)
 - Chain piecing (page 14)
 - Controlling bulk by butting seams (page 13)

Stitching

Place 2 contrasting rectangles right sides together, and stitch using chain piecing to make 13 pairs.

Note: Contrast does not necessarily mean light and dark fabrics. For example, a red and a green with the same value still have great contrast.



Chain piece rectangle sets into pairs.



Piper's Girls' Row Quilt

Getting Started

Getting Started with Piper's Girls' Row Quilt

You do not need to have a great deal of previous quilting experience to make our row quilt. The quilt is designed as a teaching tool to move your level of expertise from beginner to expert. (If you already fancy yourself an expert, we still think you will learn a lot.)

Each row uses different quilting techniques. The instructions for the rows are listed in order of difficulty level, so you will start with a simple row. By the end of the eleventh row, you will have learned valuable basic quilting techniques, as well as some specialized ones.

Note: The numbering of the rows pertains to the level of difficulty. The rows do not appear in the quilt in this numbered order.

This chapter covers some general skills and basic information you will use in all of the rows, as well as material requirements and preliminary cutting instructions.

Materials

FABRICS

Background, sashings, and inner borders: 4 yards of off-white solid (This amount allows for a little extra in case of mistakes. We all make those, right?) Cut the long length-of-grain pieces first; then cut the smaller pieces. See Cutting Borders, Sashing, and Long Rows (page 13).

For use throughout the quilt: 36 fat quarters in a variety of colors and print sizes (6 should be green in a range of hues. Scraps of these will be used for the Row 11 appliqués.)

Row 2: ¼ yard of red print

Rows 2 and 3: ¼ yard of red solid

Row 7: ¼ yard of pink print

¼ yard of orange polka dot

¼ yard of teal solid

Row 8: ½ yard of red print

½ yard of light blue print

Note: Below is a list of all the fabrics you will need to make the entire quilt.

¼ yard of yellow solid

¼ yard of pink print

Row 11: 1½ yards of green micro print for grass (You will have a lot left over. We suggest this much to be able to cut on length of grain, page 10, and to avoid having an unsightly seam running through the center.)

Outer border: 2¼ yards of blue print (You will have extra, but you will need this amount to cut the borders on the length of grain, page 13.)

Backing: 4⅞ yards

(Pick a fabric you love!)

Binding: 1½ yards

(We used a small black gingham check.)

Batting: 65" × 86"

(We love the bamboo batting!)

Medium rickrack: 8 yards in red to add into the binding (optional)

TIP A small clear 1" × 6" ruler is especially helpful for cutting the spokes.

